

# Digital Valve Positioner (DVP)

## Applications

The Woodward DVP is the state-of-the-art driver for electric actuation. It features a rugged and compact design. The DVP is designed for use with various Woodward valves and actuators. It provides positioning based on a demand signal from the control system. Multiple input type configurations allow the DVP to be used with many different turbine controllers. The driver supports redundant installations.



## Description

The DVP is designed to control valves and actuators with either limited angle torque (LAT) or brushless DC (BLDC) motor types. The driver positions based on resolver feedback located on the valve or actuator. The DVP uses the latest in Woodward control architecture, the robust controller to provide high-speed precise valve control.

The DVP is designed for plug-and-play installations on many valve types. Woodward has integrated smart technology into the new generation of valves and actuators called an ID (identification) module. Upon connection to a valve or actuator equipped with an ID module, the DVP automatically reads critical valve-specific information to set up the driver. After this auto-detection and customer configuration, the DVP is ready for use. Both pre-manufactured connectorized cables and terminal connection models are available.

The DVP is available in multiple configurations:

- Ingress Protected IP30 or IP56 models available
- Connector or terminal block outputs; conduit option available on IP56
- 125 Vdc or 24 Vdc power input options available
- EGD (Ethernet), CANopen, Analog (4–20 mA or 0–5 Vdc), PWM configurable input options

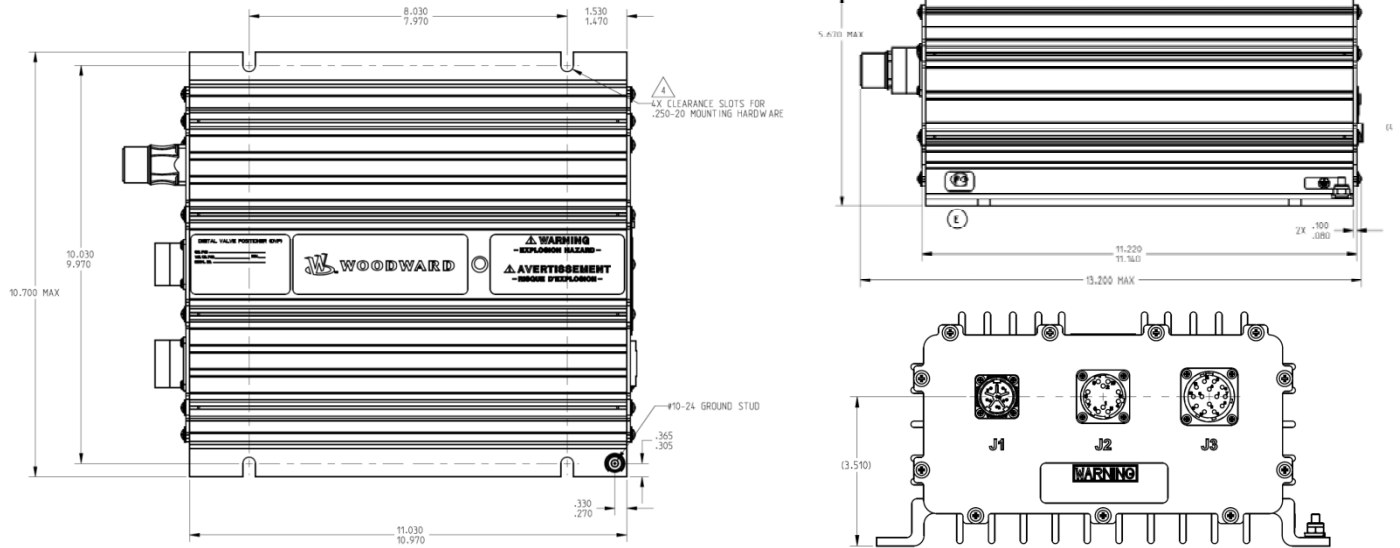
- Electric actuator driver
- Triple redundant EGD (Ethernet) or dual redundant CANopen digital communication options
- IP30 or IP56 enclosures
- ID module compatibility for plug-and-play operation
- Connector or terminal block options
- Certifications for CE – European, CSA – North American, and GOST R – Russian Federation

| DVP Compatible Valve                                     | 24 Vdc | 125 Vdc | ID Module |
|--|--------|---------|-----------|
| EGMV – BLDC Type Electric Gas Metering Valve             |        | X       | X         |
| ELMV – BLDC Type Electric Liquid Metering Valve          |        | X       | X         |
| ELBV – BLDC Type Electric Liquid Bypassing Valve         |        | X       | X         |
| EWMV – BLDC Type Electric Water Metering Valve           |        | X       | X         |
| LESV – BLDC Type Electric Sonic Gas Metering Valve       |        | X       | X         |
| LESVDR – BLDC Type Electric Sonic Gas Metering Valve     |        | X       | X         |
| LQ25 – LAT Type Liquid Metering Valve (3spd resolver)    | X      | X       |           |
| LQ25DR – LAT Type Liquid Metering Valve (3spd resolver)  |        | X       | X         |
| LQ25T – LAT Type Liquid Throttling Valve (3spd resolver) | X      | X       |           |
| LQ25BP – LAT Type Liquid Bypassing Valve (3spd resolver) | X      | X       |           |
| LQ50 – LAT Type Liquid Metering Valve                    |        | X       | X         |
| GS16DR – LAT Type Gas Metering Valve                     |        | X       | X         |
| 3103EM35MR – BLDC Type Gas Metering Valve                | X      |         |           |
| 3151EML100 – BLDC Type Water Metering Valve              | X      |         |           |

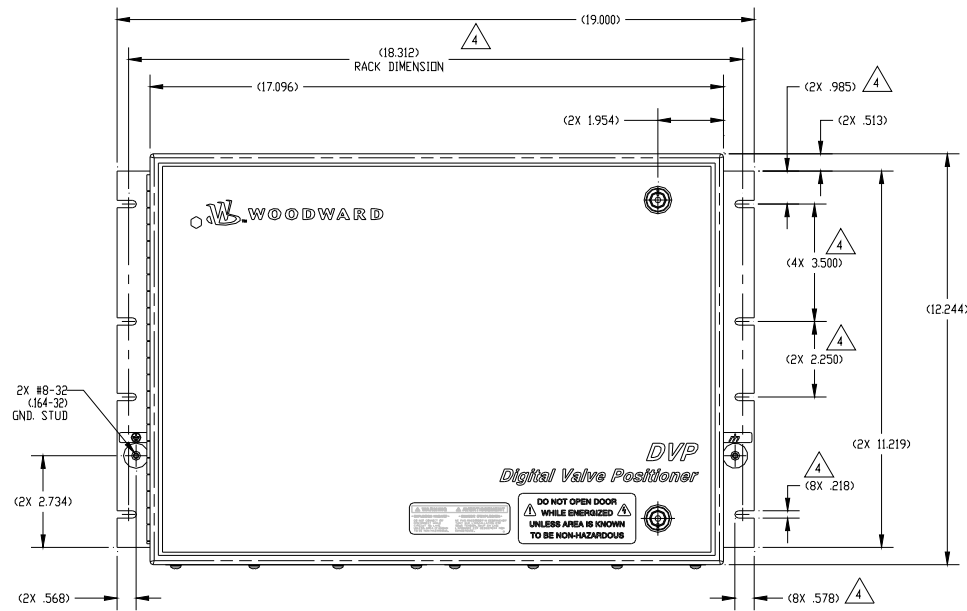
**Motor Descriptions:** LAT—Limited Angle Torque; BLDC—Brushless DC Motor Type

**Resolver Description:** 3spd—One cycle every 120 mechanical degrees

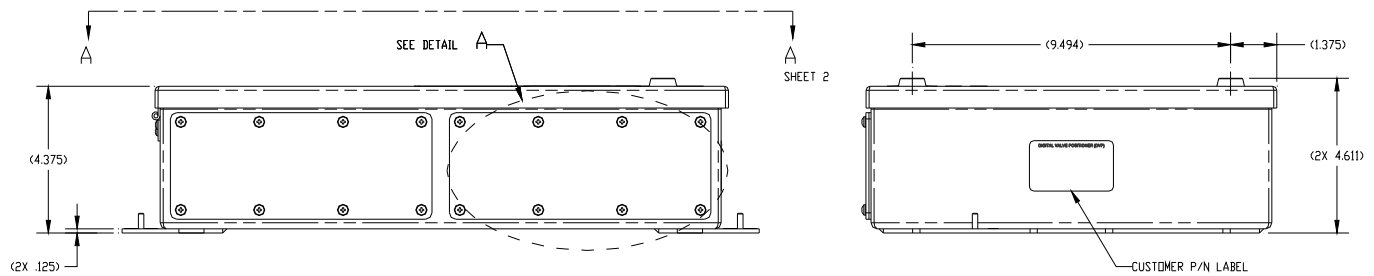
# Installation



**IP 30 Model with 3 Connector Outputs and Terminal Block Inputs**  
(Do not use for construction)



033-018  
(9989-1092)  
2010-7-14



**IP 56 Model with Connector Outputs and Conduit Inputs**  
(Do not use for construction)

## Specifications

---

### Electrical Specifications

|                           |   |
|---------------------------|---|
| Power Supply Input:       | 125 Vdc +20%, –28%<br>24 Vdc +33%, –25%   |
| Current Draw:             | See Valve or Actuator manual for current draw information   |
| Package Heat Dissipation: | With Ethernet Option: 40 W nominal, 70 W @ maximum heat-load<br>Without Ethernet Option: 40 W nominal, 63 W @ maximum heat-load<br><i>The maximum heat-load occurs when the associated fuel valve is being positioned near the maximum stop of the valve.</i> |

### Mechanical Specifications

|             |  |
|-------------|--|
| Dimensions: | IP30 Model – 279 x 272 x 145 mm (11.0 x 10.7 x 5.7 inches)<br>IP56 Model – 483 x 311 x 111 mm (19.0 x 12.24 x 4.38 inches) |
| Weight:     | IP30 Model – 7.9 kg (17.5 lb)<br>IP56 Model – 6.95 kg (15.32 lb)   |

### Environmental Specifications

|                                |  |
|--------------------------------|--|
| Ambient Operating Temperature: | –40 to +55 °C (–40 to +131 °F) with Ethernet module<br>–40 to +70 °C (–40 to +158 °F) without Ethernet module  |
| Storage Temperature:           | –40 to +105 °C (–40 to +221 °F)  |
| Humidity:                      | 0 to 100% non-condensing   |
| Mechanical Vibration:          | Woodward Specification RV5 (0.04 G <sup>2</sup> /Hz, 10–500 Hz, 2 hours/axis, 1.04 Grms)   |
| Mechanical Shock:              | Woodward Specification MS2 (30 G, 11 ms Half Sine Pulse)   |
| EMI/RFI Specification:         | EN61000-6-2: Immunity for Industrial Environments<br>EN61000-6-4: Emissions for Industrial Environments<br>Woodward-imposed requirements: Conducted Low Frequency Immunity, 50 Hz – 10 kHz |
| Impact Protection:             | The IP56 was tested to IEC 60079-0, 26.4.2 Low Impact requirements. The IP56 control must be installed in an area that provides protection against high impact.                            |
| Environmental Protection:      | IP30 per IEC 60529. Must be installed in enclosure or cabinet to provide a minimum IP54 level of protection against dust and moisture.   |

### Regulatory Compliance

#### European Compliance for CE Marking:

These listings are limited only to those units bearing the CE Marking.

**EMC Directive:** 2004/108/EC COUNCIL DIRECTIVE of 15 December 2004 on the approximation of the laws of the Member States relating to electromagnetic compatibility and all applicable amendments.

**ATEX – Potentially Explosive Atmospheres Directive:** Declared to 94/9/EEC COUNCIL DIRECTIVE of 23 March 1994 on the approximation of the laws of the Member States concerning equipment and protective systems intended for use in potentially explosive atmospheres. Zone 2, Category 3 G, Ex nA IIC T4 X

#### North American Compliance:

These listings are limited only those units bearing the CSA Identification

**CSA:** CSA Certified for Class I, Division 2, Groups A, B, C, and D, T4 at 55 °C (3-Board Configuration) and 70 °C (2-Board Configuration) ambient for use in USA and Canada Certificate 160584-1682018

#### Other European and International Compliance:

**GOST R:** Certified for use in ordinary locations within the Russian Federation per GOST R certificate POCC US.MJ03.B00713 [for 125 Vdc version only]



PO Box 1519, Fort Collins CO, USA 80522-1519  
1000 East Drake Road, Fort Collins CO 80525  
Tel.: +1 (970) 482-5811 ♦ Fax: +1 (970) 498-3058  
[www.woodward.com](http://www.woodward.com)

**Distributors & Service**

Woodward has an international network of distributors and service facilities. For your nearest representative, call the Fort Collins plant or see the Worldwide Directory on our website.

This document is distributed for informational purposes only. It is not to be construed as creating or becoming part of any Woodward contractual or warranty obligation unless expressly stated in a written sales contract.

© Woodward 2009, All Rights Reserved

**For more information contact:**

ООО «ТЕХНОЭЛЕКТРО»  
61166, г.Харьков, пр.Науки, 40, к.530а.  
тел.: (067) 376-84-96, (099) 184-62-14, (050) 302-90-33  
Viber, WhatsApp, Telegram: +38-099-184-62-14  
e-mail: [info@tekhar.com](mailto:info@tekhar.com) , URL: [www.tekhar.com](http://www.tekhar.com)  
skype: alex19749